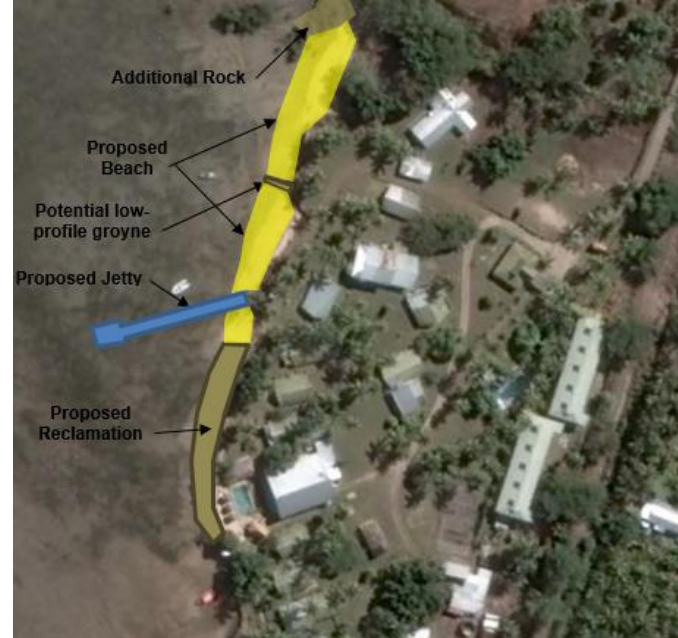


# COASTAL PROCESSES STUDIES FOR THE REDEVELOPMENT OF SEASHELL COVE AT MOMI BAY

MOMI BAY, FIJI



## INFO:

**Location:** Sea Shell Cove Resort, Momi Bay, Fiji

**Client:** Pandey Hotel Momi Ltd

**Project Date:** 2016

## SCOPE OF WORK:

- Bathymetry survey/instrument deployment
- Ecological survey
- Water sampling
- Numerical modelling
- Coastal process/hazard assessment
- Engineering calculations and specifications

## PROJECT DESCRIPTION:

eCoast was commissioned to present a coastal process assessment and design consideration for the proposed Seashell Resort-Momi re-development. The main considerations for the coastal processes and coastal engineering design at the resort are – addressing the discharge from the new WWTP, reclamation of the small embayment, development of a jetty/walkway, future development of a stable beach, consideration of the most appropriate locations for a desalination intake and outlet and the potential to move beach front structures further seaward.

