



Site location of proposed retaining wall development (sourced from Google Earth, 2019).

## INFO:

**Location:** Paekakariki, New Zealand

**Client:** Kapiti Coast District Council

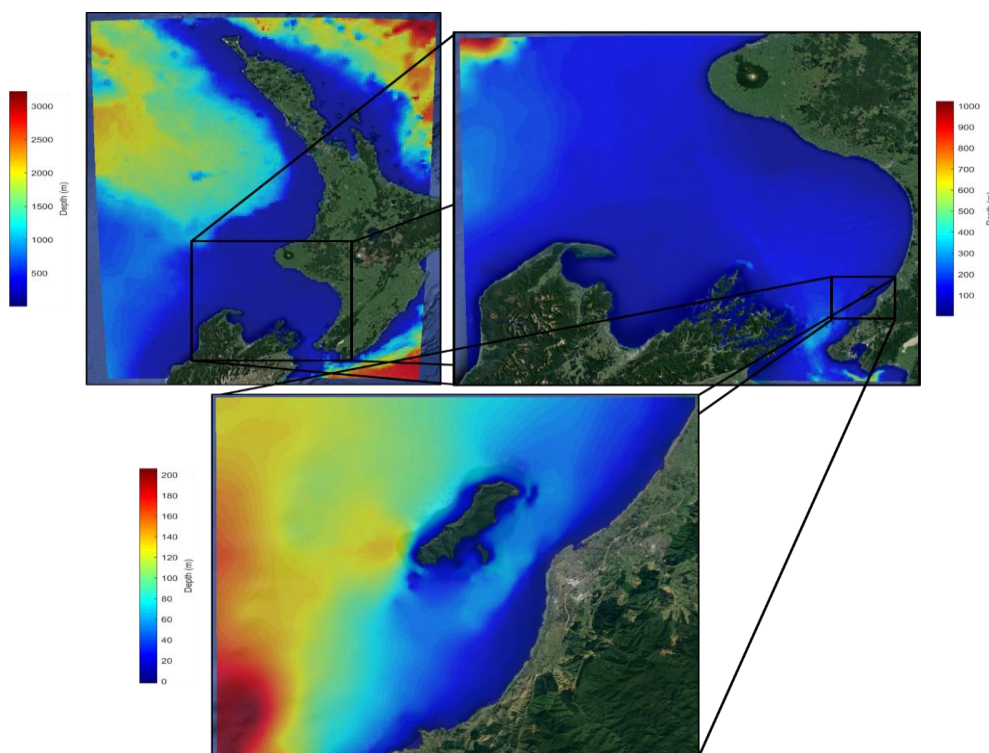
**Project Date:** 2019

## SCOPE OF SERVICES:

- Coastal Hazard Assessment, SLR
- Extreme Wave Analysis
- Nearshore Wave Transformation

## PROJECT DESCRIPTION:

eCoast was commissioned by the Kapiti Coast District Council to review a proposed retaining wall development at 27 Beach Road, Paekakariki. Paekakariki Beach is situated to the south of the salient in the lee of Kapiti Island on the southwest coast of the North Island. The coastline is characterised by narrow beaches with naturally eroding tendencies, high dune systems and dense residential settlements.



Bathymetry grid generated in the wave transformation process using SWAN.