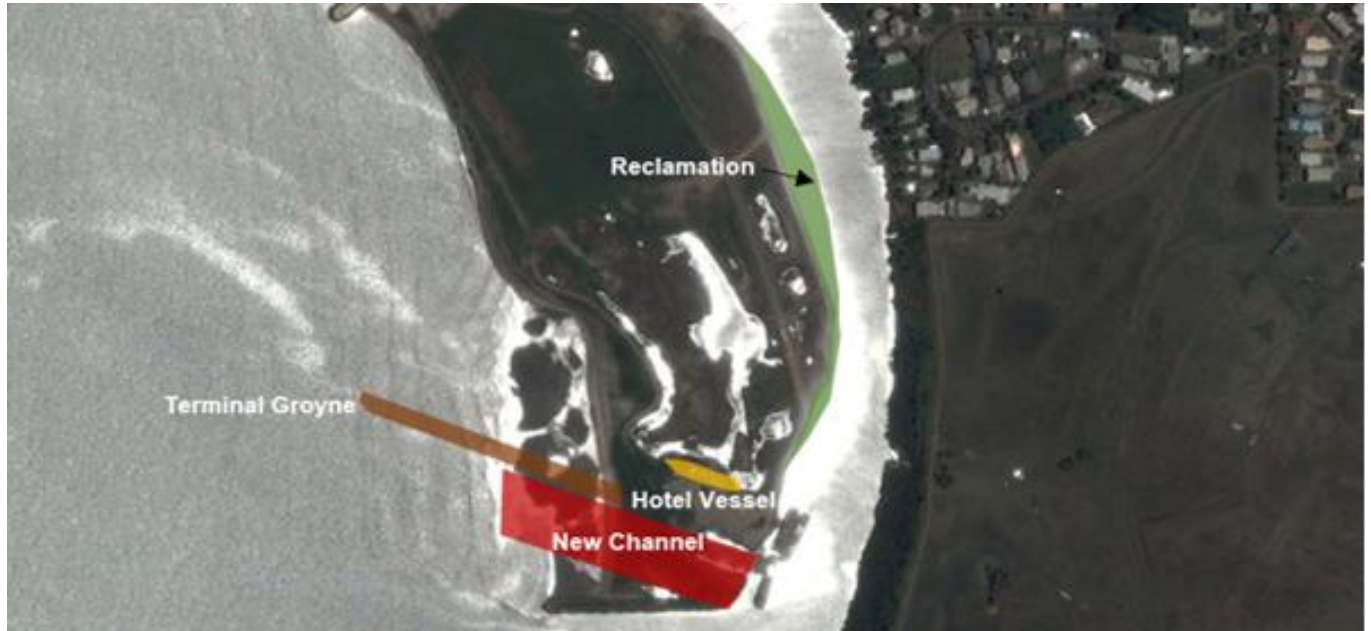


# NAISOSO ISLAND: MARINA RECLAMATION SURVEY, TERMINAL GROUYNE DESIGN AND STABILIZING OF A HOTEL VESSEL

## NAISOSO, FIJI



### INFO:

**Location:** Naisoso Island, Nadi Bay, Fiji

**Client:** RELCORP

**Project Date:** 2017

### SCOPE OF WORK:

- Bathymetry survey
- Numerical modelling
- Sediment transport modelling
- Technical/engineering design
- Stabilization of a hotel vessel

### PROJECT DESCRIPTION:

eCoast was commissioned to investigate aspects of the proposed development of the southern part of Naisoso Island in Nadi Bay. Three specific areas were addressed – the design of the Channel/Terminal groyne on the northern side of the future channel entrance, a bathymetry survey of the area that was originally considered for a future marina to determine the potential to remain for additional land and provision of recommendations to secure a hotel vessel on the island.

