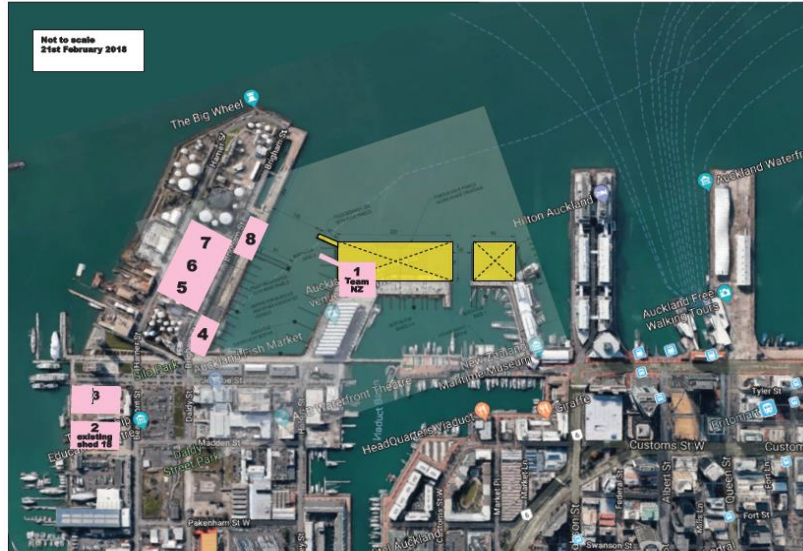


Tramco's Alternative America's Cup Base Sites



Tramco's proposed America Cup base (pink) and proposed wharf extensions (Panuku Developments) (yellow).

INFO:

Location: Auckland, New Zealand

Client: Tramco

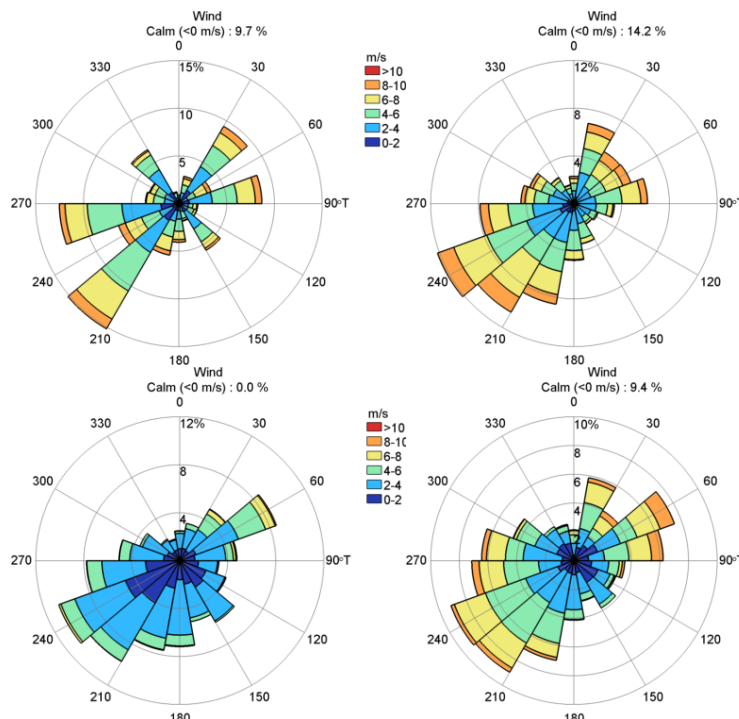
Project Date: 2018

SCOPE OF SERVICES:

- Site Visit
- Bathymetry Survey
- Desktop Research
- Wind and Wave Analysis
- Numerical Modelling
- Expert Reporting

PROJECT DESCRIPTION:

eCoast Marine Consulting and Research Ltd was part of a team led by Babbage Consultants, commissioned in part by Tramco, to assist in determining the relative merits of various development options for the proposed Americas Cup Village. Specifically, eCoast focussed on assessing the validity of claims that bases on the west side of the Wynyard Wharf area were unsuitable for the use as America's Cup bases due to wind and wave action and what mitigation could be provided to address concerns regarding wave action. Recommendations based on wind and wave action were reported on.



Wind roses for sites in Auckland (clockwise from top left: Albert Park, Newton, Mechanics Bay, Khyber Pass).